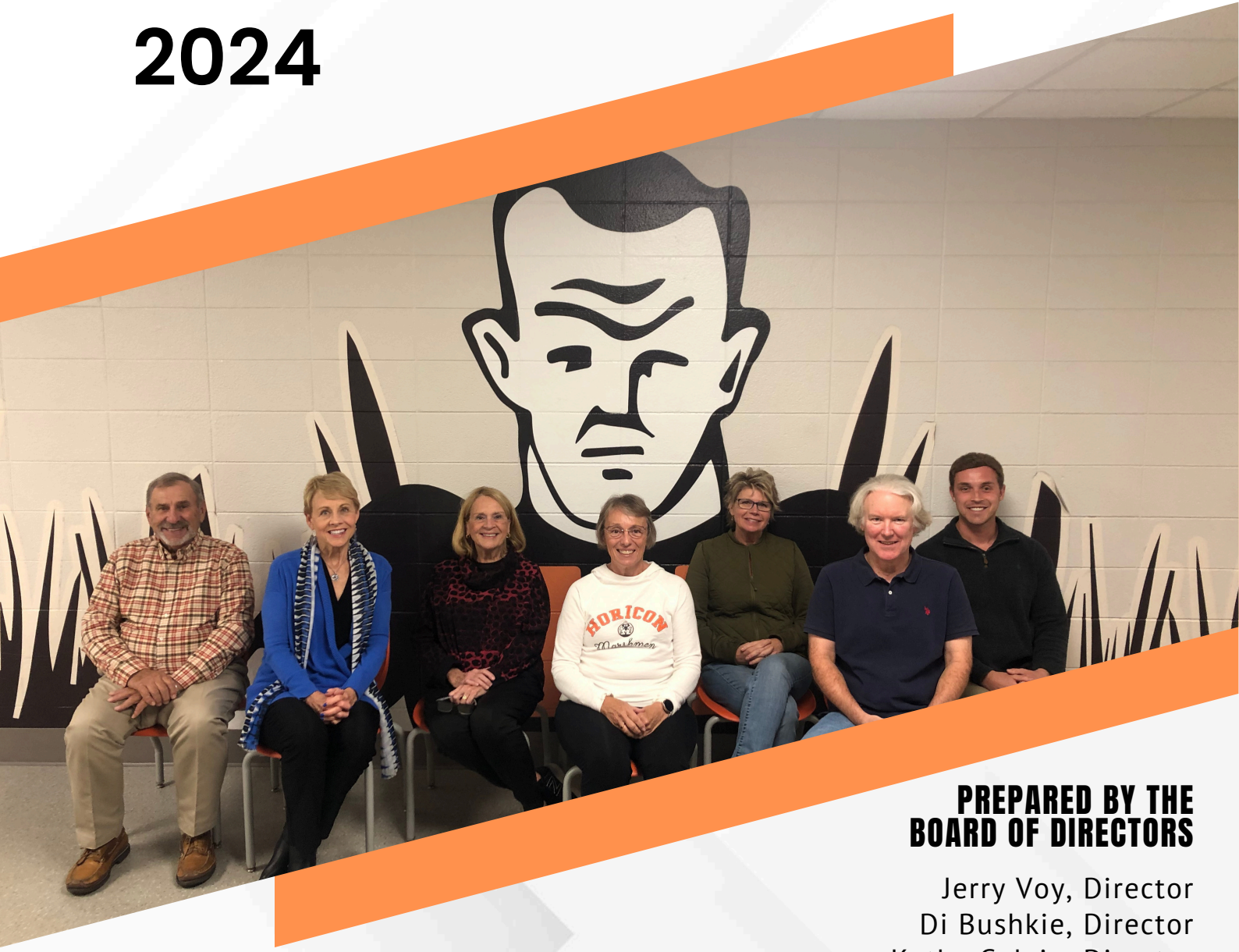




ANNUAL REPORT

2024



PREPARED BY THE BOARD OF DIRECTORS

Jerry Voy, Director
Di Bushkie, Director
Kathy Galvin, Director
Ellen Sunderland, Vice President
Jen Krueel, Treasurer
Jerry Traugher, President
Aaron Bischoff, Secretary
Rich Appel, Superintendent, School District of Horicon (Not Pictured)

Letter From The President

Thank you for your support to the Foundation and for making 2024 a success! It's important to review where we have been, where we are, and what the plans are for the new year.

We have come a long way since the foundation started in October of 2023. In 2024, we hit a major milestone in raising over \$100,000 since inception thanks to your generosity. In addition, we distributed multiple grants to the school district in our three focus areas of students, faculty/staff, and campus improvements. Those specific grants are announced via the press and social media. Also, in 2024 we added a volunteer Public Relations Lead who has diligently sent out press releases and posted on LinkedIn, Facebook, and Instagram. As far as media coverage this year, we've landed in print, online and radio local outlets. Some of these include the Dodge County Pionier, Beaver Dam Daily Citizen, Daily Dodge, and more. We also started an annual elite sponsor program in 2024 and have 21 elite sponsors. You may have seen the elite sponsor banners this fall as you drove down Gray Street by the school. During the winter months, the banners adorn the halls of the school and get a lot of visibility.

Coming up, we are excited to sponsor the 4th Annual Marshmen Open golf tournament on August 16, 2025. Please save the date! If you are a golfer, please consider being a team captain or golfing on a team. If you are not a golfer, not to worry, you can come try your luck at the basket raffle. We had over 50 baskets donated last year. We will be sending out more information about the golf tourney in early 2025.

**JEROME T. TRAUGHBER, PRESIDENT
HORICON MARSHMEN FOUNDATION, INC.**





In the picturesque heart of Wisconsin, the School District of Horicon has long been a wellspring of learning, growth, and community. With a storied history of academic excellence and commitment to nurturing young minds, this district has been a pillar of the community for generations. Now, with the Marshmen Foundation, the School District of Horicon is set to reach new heights in fostering education, supporting scholarships, grants, and enhancing infrastructure for a brighter tomorrow.



Impact + Mission

The Horicon Marshmen Foundation exists to provide financial support, scholarships, grants, and the resources needed to bolster educational opportunities within the School District of Horicon.



Over \$10,000 toward scholarships including new Horicon Marshmen Foundation Scholarship



\$100 Bowling Club



\$100 E-Sports Team



\$100 Spring Musical



\$250 Ice Fishing Team



\$1,000 School Supplies



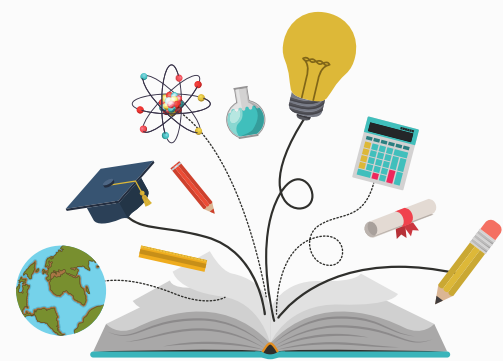
\$1,000 School Conference Room Audio and Video Equipment

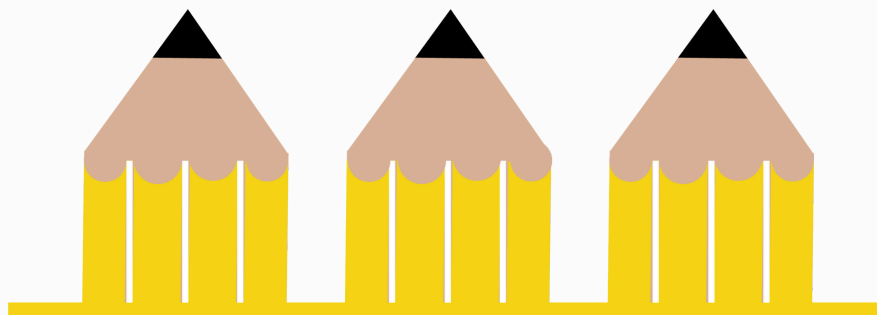


\$1,400 Foundation Advertising on Marsh Talk

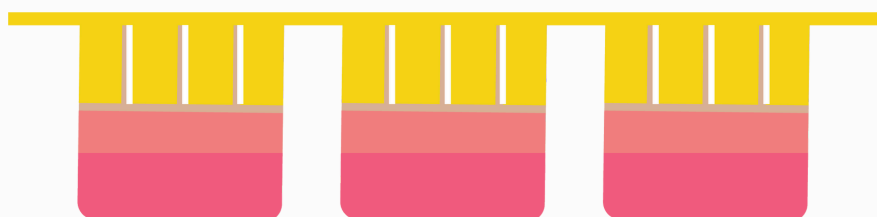


\$2,000 Wellness Day for Teachers and Staff





Focus Areas



The Horicon Marshmen Foundation stands firmly on the pillars of:

- 1.) Students
- 2.) Grants to Teachers
- 3.) Campus Improvements



Financial Snapshot

The Horicon Marshmen Foundation is empowering the future by fostering education, supporting scholarships, awarding grants, and enhancing infrastructure for a brighter tomorrow.


Contributions \$45,386.80
Investment Income \$6,275.72
Total Support \$51,662.52

Grants \$29,300.00
Investment Fees \$162.57
Admin Fees \$749.46
Total Expenses \$30,212.03


Change in Net Assets \$21,450.49

Fund Balance as of 12/31/2023 \$61,900.03
Fund Balance as of 12/31/2024 \$83,350.52





The Horicon Marshmen Foundation actively engages with the community, parents, educators, and students to identify their unique requirements and dreams. Working collaboratively with the district's leadership and stakeholders, HMF implements programs and projects that resonate with the district's aspirations, thereby addressing the distinctive needs of its students.



2024 Donor List



Elite Donors

We would like to extend a heartfelt thank you to our 2024 Elite Sponsors.



Platinum Level

\$5,000+

Horicon Bank
Snyder Family Charity Trust
Traugber Family



Gold Level

\$2,500+

Behnke Family
Mayo Family



Silver Level

\$1,000+

Michael and Judy Halfman
Horicon Hills Golf Club
Walters Buildings



Bronze Level

\$500+

Rich and Tammy Appel
Brendemuehl Family
CD Smith
Class of 1984
Demco
Kathy Galvin
Hoefs Recruiting Solutions
Horicon Lions Club
Koepsell Funeral Home
M3 Insurance
Surefire
Vallen Distribution
Voy Family

Marshmen Golf Outing Donors

Pufahl Family
Enders Company LLC
Horicon Rod and Gun Club
Horicon Ace Hardware
In Memory of Mike Bushkie
Horicon Lions Club
Heine's Pizza
Cornerstone Business Services, Inc.
Rock River Mallards Youth Baseball
Horicon School Board of Education
Coldwell Banker, The Brenda Bruyette Team
Jacob and Madi Hakola
Koepsell Funeral Home
Rock River Tap
Edward Jones Investments, Kevin Carnine
Todd Bushkie Epic Mortgage
School District of Horicon Admin Team
The LeBouton Family
Kenmold Company - Thomas Carr
Horicon Athletic Booster Club
Horicon Family Chiropractic
Alix and Nick Schmitt
Jen and Tom Kruel
Quinn and Zach Lorino
Sarah Ulrich Reчек
Sinissippi Lake Pub
Jim and Patti Murray
Marlin Technologies
Rayome Residentials LLC
Bennett Landscaping LLC
In Memory of Kicker Wagener
Marshland Pharmacy
Wenninger Auto
American Family Michelle Wanie Agency ,Inc.
Edward Jones - Aaron Bischoff
Coach Roger Schlieve and Family
Marsh Hawk Wrestling
Beaver Dam Napleton Chevy Buick GMC
Horicon Girls Softball State Champions 2002,
2003, 2018, 2019
Vantage Financial
Justman Trucking, Inc.
Sommer's Automotive
Horicon American Legion Post 157
Danny Boys
Pufahl Pallet
Hoefs Recruiting Solutions
Preferred Dental Partners
Modern Woodmen Josh Muche

Other Donors

Larry and Kris Weber
Andrea Macheel
Jack Walters and Sons, Corp.
Sheila Beyer
Fred and Ruth Schwertfeger
Dustin Hoefs
Dorothy Lambacher
Timothy and Judy Young
Matthew Rohde
Kay Lettenberger
Kristina Aschenbrenner
Daniel and Margaret Keuler
Melodi Peters
John and Susan Jaeckel
Gregory and Deanna Hince
Vitauts and Mary Vitolins
Monica Bohn
John and Nancy Raasch
Mark G. and Margaret A. Furdek
Leon Janssen
Volker and June Todt
Sheri Burger
Craig and Karen Halsema
Brian and Lisa Bischoff
Kristin Kuczynski
Dean and Linda Costello
Stephan and Marcy Petrov
Steven and Jill Lichon
Harris and Beverly Wilke
Rebecca Endres
Matthew Wendt
David and Marilyn Walters
Ronald and Karen Dahm
Sandra Germer
William and Elizabeth Norberg
Garret and Joan Nakama
David Schwantz
Jacqueline Bjork
Walter and Karen Kangas
Monica Bohn
Richard and Debra Schabowski
James and Carolyn Koeber
Karl and Marianne Hornung
Troy and Teresa Graven
Carrie Nelson
Donald and Karen Pagel
Lawrence and Delores Jobe

Board of Directors

Rich Appel, Superintendent, School District
of Horicon

President, Jerry Traughber

Vice President, Ellen Sunderland

Secretary, Aaron Bischoff

Treasurer, Jen Krue

Director, Jerry Voy

Director, Kathy Galvin

Director, Di Bushkie



How To Support

The success of The Marshmen Foundation depends on the engagement and support of the community. We welcome all residents, parents, local businesses, and benefactors to be part of our endeavor. Whether you wish to volunteer your time, a direct personal donation, or contribute your expertise, together we can secure a brighter future for the School District of Horicon. Please visit <https://fdlareaafoundation.com/marshmen/> to learn more.

